



Designer's Choice Collection

WINTER/SPRING 2025

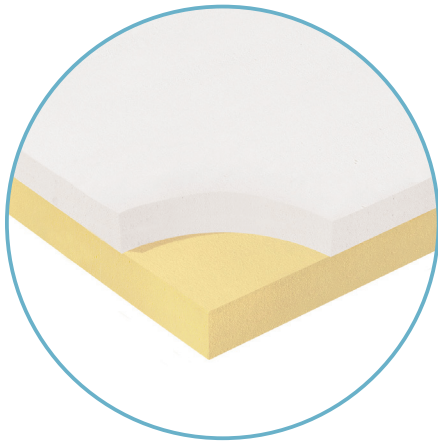
L A  B O Y[®]



L A **Z** B O Y®



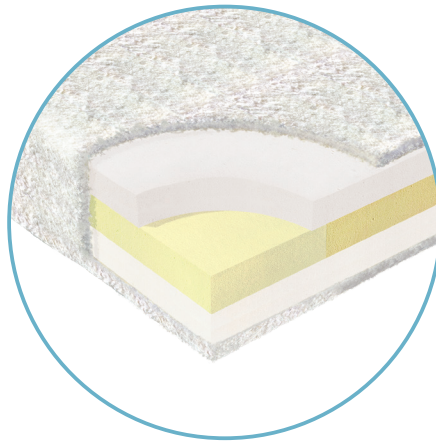
TEMPUR®
RESPONSE MEMORY FOAM



SEAT CUSHION

RECLINING FURNITURE

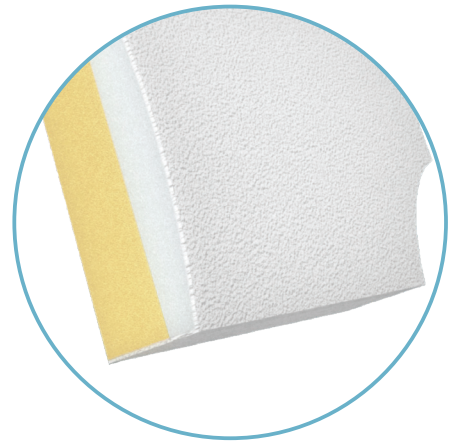
La-Z-Boy Plus
TEMPUR-Response®
Memory Foam
Optional seat cushion upgrade



SEAT CUSHION

STATIONARY FURNITURE

ComfortCore® Plus
TEMPUR-Response®
Memory Foam
Optional seat cushion upgrade



BACK CUSHION

**SELECT FURNITURE
STYLES**

La-Z-Boy Plus
TEMPUR-Response®
Memory Foam
Optional back cushion upgrade
available on select styles

ONE-OF-A-KIND SUPPORT

Provides exceptional support and maximum pressure relief across the entire surface of the cushion.

DEEPER RELAXATION

Uniquely adapts and conforms to your body for ultimate comfort.

ENHANCED DURABILITY

Retains shape better compared to many traditional memory foams.

AVAILABLE ON SOFAS, LOVESEATS, RECLINERS,
SECTIONALS, CHAIRS AND SLEEPER MATTRESSES.

Prefix Definitions

ROCKER RECLINERS/WALL RECLINERS/GLIDERS

- 010.....Rocking Recliner
- P10.....Power Rocking Recliner
- 10U.....Power Rocking Recliner w/ Headrest
- 10X.....Power Rocking Recliner w/ Headrest & Lumbar
- 016.....Wall Recliner
- P16.....Power Wall Recliner
- 16X.....Power Wall Recliner w/ Headrest & Lumbar
- 017.....Swivel Gliding Recliner
- 30L.....Left-Arm Sitting Rocking Recliner
- 30R.....Right-Arm Sitting Rocking Recliner
- 3CS/SC3....Storage Console

LIFT CHAIRS

- 1HM.....Gold Power Lift Recliner w/ Massage & Heat
- 1PH.....Platinum Power Lift Recliner w/ Headrest & Lumbar
- 1PL.....Platinum Power Lift Recliner
- 3BL.....Bronze Power Lift Recliner
- 4LP.....Silver Power Lift Recliner

RECLINA-WAY® MOTION

- 330.....Wall Reclining Sofa
- 33U.....Power Wall Reclining Sofa w/ Headrest
- 33X.....Power Wall Reclining Sofa w/ Headrest & Lumbar
- 320.....Wall Reclining Loveseat
- 32U.....Power Wall Reclining Loveseat w/ Headrest
- 32X.....Power Wall Reclining Loveseat w/ Headrest & Lumbar
- 390/339....Wall Reclining Loveseat w/ Console
- 39U/U39...Power Wall Reclining Loveseat w/ Headrest & Console
- 39X/X39...Power Wall Reclining Loveseat w/ Console, Headrest & Lumbar

LA-Z-MOTION™ MOTION

- 84U.....Power Reclining Chair w/ Headrest
- 88U.....Power Reclining Loveseat w/ Headrest
- 81U.....Power Reclining Sofa w/ Headrest



KODIE in LB206077

LA-Z-TIME® MOTION

- 445.....Reclining Chair and a Half
- U45.....Power Reclining Chair & a Half w/ Headrest
- X45.....Power Reclining Chair & a Half w/ Headrest & Lumbar
- 443.....Reclining 2-seat Sofa
- U43.....Power Reclining 2-seat Sofa w/ Headrest
- X43.....Power Reclining 2-seat Sofa w/ Headrest & Lumbar
- 444.....Reclining Sofa
- U44.....Power Reclining Sofa w/ Headrest
- X44.....Power Reclining Sofa w/ Headrest & Lumbar
- 448.....Reclining Loveseat
- U48.....Power Reclining Loveseat w/ Headrest
- X48.....Power Reclining Loveseat w/ Headrest & Lumbar
- 449.....Reclining Loveseat w/ Console
- U49.....Power Reclining Loveseat w/ Headrest & Console
- X49.....Power Reclining Loveseat w/ Headrest, Lumbar & Console

LA-Z-TIME® MODULARS

- 44A.....Left-Arm Sitting Recliner
- U4A.....Power Left-Arm Sitting Recliner w/ Headrest
- X4A.....Power Left-Arm Sitting Recliner w/ Headrest & Lumbar
- 44B.....Right-Arm Sitting Recliner
- U4B.....Power Right-Arm Sitting Recliner w/ Headrest
- X4B.....Power Right-Arm Sitting Recliner w/ Headrest & Lumbar
- 44C.....Corner Unit
- SC4.....Storage Console
- 44D.....Left-Arm Sitting Reclining Loveseat
- U4D.....Power Left-Arm Sitting Reclining Loveseat w/ Headrest
- X4D.....Power Left-Arm Sitting Reclining Loveseat w/ Headrest & Lumbar
- 44E.....Right-Arm Sitting Reclining Loveseat
- U4E.....Power Right-Arm Sitting Reclining Loveseat w/ Headrest
- X4E.....Power Right-Arm Sitting Reclining Loveseat w/ Headrest & Lumbar
- M44.....Armless Chair
- 44Q.....Left-Arm Sitting Reclining Chaise
- U4Q.....Power Left-Arm Sitting Reclining Chaise w/ Headrest
- X4Q.....Power Left-Arm Sitting Reclining Chaise w/ Headrest & Lumbar
- 44S.....Armless Recliner
- U4S.....Power Armless Recliner w/ Headrest
- X4S.....Power Armless Recliner w/ Headrest & Lumbar
- 44V.....Right-Arm Sitting Reclining Chaise
- U4V.....Power Right-Arm Sitting Reclining Chaise w/ Headrest
- X4V.....Power Right-Arm Sitting Reclining Chaise w/ Headrest & Lumbar

LA-Z-MOTION™ MODULARS

- 8AU.....Power Left-Arm Sitting Recliner w/ Headrest
- 8BU.....Power Right-Arm Sitting Recliner w/ Headrest
- 8CO.....Corner Unit
- 8MO.....Armless Middle
- 8SU.....Power Armless Recliner w/ Headrest
- 8SC.....Storage Console
- 85U.....Power Reclining Chair & a Half w/ Headrest

Prefix Definitions

STATIONARY SECTIONALS

- 60A.....Left-Arm Sitting Chair
- 6AL.....Left-Arm Sitting Storage Arm
- 60B.....Right-Arm Sitting Chair
- 6AR.....Right-Arm Sitting Storage Arm
- 60C.....Rounded Corner Unit
- 6CC/6C7..90 Degree Corner Unit
- 60D/67D..Left-Arm Sitting Loveseat
- 60E/67E..Right-Arm Sitting Loveseat
- 60L.....Left-Arm Sitting Chaise
- 60R.....Right-Arm Sitting Chaise
- 60M/67M..Armless Chair
- 6MM.....Armless Loveseat
- 6SC.....Storage Console
- 6SL.....Left-Arm Sitting Chaise w/ Storage
- 6SR.....Right-Arm Sitting Chaise w/ Storage
- 6SP.....Armless Full Sleeper
- 67K.....Right-Side Sitting Bumper Chaise
- 67J.....Left-Side Sitting Bumper Chaise

STATIONARY SOFAS & SLEEP SOFAS

- 510.....Queen Sleep Sofa
- 51S.....Queen Sleep Sofa w/ Chaise
- 520.....Full Sleep Sofa
- 610/617....Sofa
- 61S.....Sofa w/ Chaise
- 620.....Apartment Size Sofa
- 630/637...Loveseat
- 640.....Extra-Long Sofa
- 555.....Twin Sleep Chair & A Half
- 655.....Chair & A Half
- 230/237...Chair
- 2SC.....2-Arm Chaise w/ Storage
- 240/247...Ottoman

DUO*

- P91.....Power Reclining Sofa
- P93.....Power Reclining Loveseat
- P94.....Power Reclining Chair
- P9D.....Power Left-Arm Sitting Reclining Loveseat
- P9E.....Power Right-Arm Sitting Reclining Loveseat
- 90M.....Armless Middle

SPECIAL ITEMS

- O1P.....Single Custom Pillow
- O8P.....Pair of Custom Pillows
- O88.....Swivel/Tall Bases/Handles/Armcaps/Battery Packs/Mattresses/Misc. Items

CLASSICS

- O28.....High Leg Reclining Chair
- 295.....High Leg Reclining Chair
- 29U.....High Leg Power Reclining Chair w/ Headrest

COMPLEMENTS

- O24.....Ottoman
- 210.....High Leg Swivel Chair
- 215.....Swivel Chair
- 225.....Swivel Gliding Chair
- 235.....Chair
- 245.....Ottoman
- 265.....Reclining Chair



NEW WILMETTE in HL190677



Style Name Index

Name	Style	Page No.	Name	Style	Page No.
ALLEGRA	401.....	6	MONTROSE	668.....	28
ALMA	425.....	14	OLIVER	301.....	3
BELLEVUE	421.....	11	OPAL	456.....	19
BENNETT	899.....	34	REEGAN	460	21
BRENTWOOD	430	15	RHEEVES	458.....	20
CARLETON	471.....	23	RILEY	448.....	17
CHARLOTTE	931.....	30	ROUNDAABOUT	225	2
CLEO	605.....	26	ROXIE	462.....	22
COLBY	893.....	33	SCARLETT	431.....	16
CORY	205.....	1	TAHOE	632.....	27
DANTE	405	9			
DORA	400	5			
ELDORADO	423.....	12			
FERNDALE	408	10			
FLETCHER	424.....	13			
HAVEN	450	18			
KIMBERLY	916.....	29			
LEO	30A.....	4			
MAEVE	402.....	7			
MARIETTA	498.....	25			
MERCER	404	8			
MIDTOWN	479.....	24			

Table of Contents

	Style	Name	Page	Stationary Chair	Ottoman	Reclining Chair	Swivel Chair	Press Back Recliner	Power	Fabric	Leather
	205	CORY	1		•					•	•
	225	ROUNABOUT	2		•					•	•
	301	OLIVER	3		•					•	•
	30A	LEO	4		•					•	•
	400	DORA	5	•	•		•			•	•
	401	ALLEGRA	6	•	•		•			•	•
	402	MAEVE	7	•	•		•			•	•
	404	MERCER	8			•			•	•	
	405	DANTE	9			•			•	•	•
	408	FERNDALE	10		•			•		•	•
	421	BELLEVUE	11				•			•	
	423	ELDORADO	12			•				•	•
	424	FLETCHER	13			•				•	•
	425	ALMA	14				•			•	
	430	BRENTWOOD	15			•			•	•	•
	431	SCARLETT	16			•				•	•

Table of Contents

Style	Name	Page	Stationary Chair	Ottoman	Reclining Chair	Swivel Chair	Press Back Recliner	Power	Fabric	Leather
	448	RILEY	17		•				•	•
	450	HAVEN	18		•				•	•
	456	OPAL	19			•			•	•
	458	RHEEVES	20		•		•	•	•	•
	460	REEGAN	21			•			•	•
	462	ROXIE	22			•			•	
	471	CARLETON	23		•		•	•	•	•
	479	MIDTOWN	24			•			•	•
	498	MARIETTA	25	•					•	•
	605	CLEO	26	•					•	•
	632	TAHOE	27		•				•	•
	668	MONTROSE	28	•	•				•	•
	916	KIMBERLY	29		•				•	
	931	CHARLOTTE	30		•				•	
	893	COLBY	33		•			•	•	•
	899	BENNETT	34		•			•	•	•

Limited Lifetime Warranty



At La-Z-Boy, when we build our furniture we build it to last. And that's why we back the majority of our frames with a Limited Lifetime Warranty assuring your complete satisfaction.

Frames, mechanisms, cushions and springs are quality crafted then rigorously tested for long-lasting comfort. Fabrics are wear-tested in our lab before being La-Z-Boy certified. And, for homes with children, pets or just everyday life, we have unique specialty fabrics that will suit your specific needs.



MERCER in D197034

COMPLEMENTS FROM LA-Z-BOY*	1 YEAR	3 YEAR	5 YEAR	LIMITED LIFETIME WARRANTY
Mechanism				•
Frame				•
Show Wood	•			
Springs and Swivels				•
Polyurethane Foam Cushioning	•			
ComfortCore® Cushion		•		
ComfortCore® Plus TEMPUR-Response® Memory Foam Cushion			•	
Fabric and Leather conserve™ Fabric* Antimicrobial Fabric and Leather* Restore by Nanobionic® Fabric	•			
iClean™ Fabric and Leather* iClean™ and conserve™ Fabric* iClean™ and Antimicrobial Fabric and Leather* iClean™ and Restore by Nanobionic® Fabric*		•		

LA-Z-BOY® CLASSICS® CHAIRS	1 YEAR	3 YEAR	5 YEAR	LIMITED LIFETIME WARRANTY
Mechanism				•
Frame				•
Wood Frame (Applies to style 295-423)			•	
Show Wood	•			
Show Wood Arms	•			
Springs				•
Electrical Components (Applies to 29U & 25U prefixes)		•		
Polyurethane Foam Cushioning	•			
TEMPUR-Response® Memory Foam Cushion		•		
Fabric and Leather conserve™ Fabric* Antimicrobial Fabric and Leather* Restore by Nanobionic® Fabric	•			
iClean™ Fabric and Leather* iClean™ and conserve™ Fabric* iClean™ and Antimicrobial Fabric and Leather* iClean™ and Restore by Nanobionic® Fabric*		•		

duo® CHAIRS	1 YEAR	3 YEAR	5 YEAR	LIMITED LIFETIME WARRANTY
Frame				•
Show Wood	•			
Springs and Spring Systems				•
Electrical Components		•		
duo® Mechanism				•
ComfortCore® Cushion		•		
ComfortCore® Plus TEMPUR-Response® Memory Foam Cushion			•	
Fabric and Leather conserve™ Fabric* Antimicrobial Fabric and Leather* Restore by Nanobionic® Fabric	•			
iClean™ Fabric and Leather* iClean™ and conserve™ Fabric* iClean™ and Antimicrobial Fabric and Leather* iClean™ and Restore by Nanobionic® Fabric*		•		

One year warranty applies to seam failure, fabric separation, and nap loss on fabric covers. Warranty on fabric and leather covers manufacturing and material defects. Natural markings on leather are not considered defects. To see full warranty visit la-z-boy.com/content/CustomerCare.

*Available on most La-Z-Boy styles. To learn more about iClean™, a complete list of spills covered and exclusions visit la-z-boy.com/content/CustomerCare.

Options

C1
C2 **CORD**



Cord accent can be added to primary or secondary pillows on most styles.

F1
F2 **FRINGE**



Fringe accent can be added to primary or secondary pillows on most styles.

FP **FEATHERLITE PILLOWS**



Upgrades accent pillows to the luxurious comfort of 95% duck feathers, 5% duck down, encased in a 100% cotton down-proof ticking (DPT) fabric for additional support.

LG **LEG CHANGE**



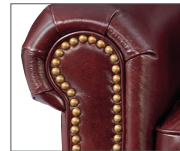
Changes all standard legs to a different leg design.

NB **NAILHEAD TRIM - BLACK**



Hammered black nickel nailhead trim can be added to select styles.

NH **NAILHEAD TRIM - BRASS**



Brass nailhead trim can be added to select styles.

NS **NAILHEAD TRIM - PLATINUM**



Platinum nailhead trim can be added to select styles.

NN **NO NAILHEAD TRIM**



Nailhead trim can be removed from styles when it is a standard feature.

P1 **CONTRASTING PILLOWS**



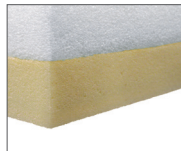
Fabric on accent pillows can be changed.

P2 **CONTRASTING PILLOWS**



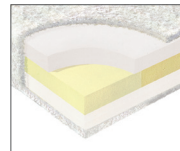
Fabric on second set of accent pillows can be changed on styles that come standard with two sets of pillows.

TF **TEMPUR-RESPONSE® MEMORY FOAM CUSHIONING**



Upgrades standard seat(s), chaise(s), and legrest(s) to TEMPUR-Response® memory foam cushioning. This cushioning is sensitive to temperature and may feel firmer in rooms 65° F or colder. It is responsive to body temperature and will soften when occupied. The use of electric blankets is not recommended.

Z5 **COMFORTCORE® PLUS TEMPUR-RESPONSE® MEMORY FOAM CUSHIONING**



Upgrades standard ComfortCore® seat cushions to ComfortCore plus TEMPUR-Response® Memory Foam seat cushions.

ZB **COMFORTCORE® PLUS TEMPUR-RESPONSE® MEMORY FOAM SEAT AND BACK CUSHIONING**



Upgrades standard ComfortCore® seat cushions and backs to ComfortCore plus TEMPUR-Response® Memory Foam seat and back cushioning.

088AC2
088AC3
088AC4 **ARM CAP/ HEADREST COVERS**



Quantities of napkin style arm caps and headrest covers are available with all fabric orders.

088 BP1
088 BP2 **BATTERY PACK**



Add a rechargeable lithium-ion battery pack to power Designer's Choice and duo styles to allow for cordless operation.

EXTRA FABRIC



Additional yards of fabric or complete leather hides can be ordered for use in decorative detailing or to be kept on hand in the event that a repair is needed.

LW **LEFT WIRELESS REMOTE**



Adds Left-Side Sitting mounted cradle and wireless remote in place of standard Right-Side Sitting remote on 29U prefix styles.

RW **RIGHT WIRELESS REMOTE**



Control panel with mounted cradle and wireless remote on Right-Side Sitting. Standard on 29U prefix styles.

Finish Options

007 FINISH - BROWN MAHOGANY



The medium brown patina of this finish is a classic that easily mixes with other finishes in a room for an enduring look that never goes out of style.

021 FINISH - COFFEE



A deep rich finish with dark brown undertones, this sophisticated hue creates a contemporary vibe and an up-to-the-minute look.

041 FINISH - GRAPHITE



With understated gray tones that project a style that's both dramatic and modern, this finish makes a powerful design statement in any room.

071 FINISH - DRIFTWOOD



This textured, lighter natural wood tone produces a more casual finish that is mixable within any room environment.

142 FINISH - MESA



Medium brown with red undertones, this finish has a look that will add both richness and warmth to the look of your home.

205 CORY

DESIGNER'S CHOICE

L A Z B O Y®



**ADDITIONAL
STORAGE**

024-205, Shown in D185372

COVER CAP CODE CHOICES: FABRIC: DR, UR, DP, NP, PS, UE, VS, BU **RECYCLED LEATHER:** RL **LEATHER:** LL

STYLE	STYLE CATEGORY	DIMENSIONS	OPTIONS
024-205	Ottoman	20"H X 45"W X 26"D	N/A

FINISHES: Standard: N/A, Optional: N/A

225 ROUNDAABOUT

DESIGNER'S CHOICE

L A Z B O Y®



024-225, Shown in E186672

COVER CAP CODE CHOICES: FABRIC: DR, UR, DP, NP, PS, UE, VS, BU **RECYCLED LEATHER:** RL **LEATHER:** LL

STYLE	STYLE CATEGORY	DIMENSIONS	OPTIONS
024-225	Ottoman	18"H X 35"W X 35"D	N/A

FINISHES: Standard: N/A, Optional: N/A

301 OLIVER

DESIGNER'S CHOICE

L A Z B O Y®



**ADDITIONAL
STORAGE**

245-301, Shown in FL202651

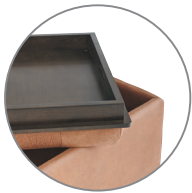
COVER CAP CODE CHOICES: FABRIC: DR, UR, DP, NP, PS, UE, VS, BU RECYCLED LEATHER: RL LEATHER: LL, LM

STYLE	STYLE CATEGORY	DIMENSIONS	OPTIONS
245-301	Ottoman	18"H X 39.5"W X 39.5"D	N/A

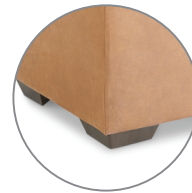
FINISHES: Standard: N/A, Optional: N/A

30A LEO

DESIGNER'S CHOICE



ADDITIONAL STORAGE



STANDARD FEET

024-30A, Shown in D179787

COVER CAP CODE CHOICES: FABRIC: DR, UR, DP, NP, PS, UE, VS, BU **RECYCLED LEATHER:** RL **LEATHER:** LL

STYLE	STYLE CATEGORY	DIMENSIONS	OPTIONS
024-30A	Ottoman	21.5"H X 22.5"W X 22.5"D	4C

FINISHES: Standard: (007) Brown Mahogany, Optional: (021) Coffee, (041) Graphite, (071) Driftwood

400 DORA

DESIGNER'S CHOICE

L A Z B O Y®



225-400

235/245-400, Shown in N182994

COVER CAP CODE CHOICES: FABRIC: DR, UR, DP, NP, PS, UE, VS, BU **RECYCLED LEATHER:** RL **LEATHER:** LL, LM

STYLE	STYLE CATEGORY	DIMENSIONS	OPTIONS
225-400	Swivel Gliding Chair	41.5"H X 34.5"W X 38"D	Z5
235-400	Chair	41.5"H X 34.5"W X 37.5"D	Z5
245-400	Ottoman	20"H X 29"W X 23.5"D	N/A

FINISHES: Standard: (007) Brown Mahogany, Optional: (021) Coffee, (041) Graphite, (071) Driftwood

*Finish option available on prefixes 235 and 245 only

401 ALLEGRA

DESIGNER'S CHOICE

L A Z B O Y®



225-401

235/245-401, Shown in C158431

COVER CAP CODE CHOICES: FABRIC: DR, UR, DP, NP, PS, UE, VS, BU **RECYCLED LEATHER:** RL **LEATHER:** LL

STYLE	STYLE CATEGORY	DIMENSIONS	OPTIONS
225-401	Swivel Gliding Chair	36"H X 34"W X 35"D	Z5
235-401	Chair	35.5"H X 34"W X 34"D	Z5
245-401	Ottoman	19"H X 27.5"W X 23"D	N/A

FINISHES: Standard: (021) Coffee, Optional: (007) Brown Mahogany, (041) Graphite*

*Finish option available on prefixes 235 and 245 only

402 MAEVE

DESIGNER'S CHOICE

L A Z B O Y®



225-402



ADDITIONAL STORAGE

235/245-402, Shown in FL196373

COVER CAP CODE CHOICES: FABRIC: DR, UR, BU RECYCLED LEATHER: RL LEATHER: LL, LM

STYLE	STYLE CATEGORY	DIMENSIONS	OPTIONS
225-402	Swivel Gliding Chair	35.5"H X 31"W X 40"D	Z5
235-402	Chair	37"H X 31"W X 40"D	Z5
245-402	Ottoman	18"H X 28"W X 22"D	N/A

FINISHES: Standard: (007) Brown Mahogany, Optional: (021) Coffee, (041) Graphite* and (071) Driftwood*

*Finish options available on prefix 235 only

404 MERCER

DESIGNER'S CHOICE

L A Z B O Y®



29U-404, Shown in Q191273

COVER CAP CODE CHOICES: FABRIC: DR, UR, UE, BU RECYCLED LEATHER: RL

STYLE	STYLE CATEGORY	DIMENSIONS	OPTIONS
295-404	High Leg Reclining Chair	43"H X 32"W X 38.5"D	TF
29U-404	High Leg Power Recliner w/ Headrest	43"H X 32"W X 38.5"D	LW, TF

FINISHES: Standard: (007) Brown Mahogany, Optional: (021) Coffee, (041) Graphite, (071) Driftwood

405 DANTE

DESIGNER'S CHOICE

L A Z B O Y®



29U-405, Shown in HL190673

COVER CAP CODE CHOICES: FABRIC: DR, UR, DP, NP, PS, UE, VS, BU **RECYCLED LEATHER:** RL **LEATHER:** LL, LM

STYLE	STYLE CATEGORY	DIMENSIONS	OPTIONS
295-405	High Leg Reclining Chair	43"H X 29.5"W X 43"D	TF
29U-405	High Leg Power Recliner w/ Headrest	43"H X 29.5"W X 43"D	LW, TF

FINISHES: Standard: (007) Brown Mahogany, Optional: (021) Coffee, (041) Graphite and (071) Driftwood

408 FERNDALE

DESIGNER'S CHOICE

L A Z B O Y®



225-408

245/265-408, Shown in E171154 (Discontinued)

COVER CAP CODE CHOICES: FABRIC: DR, UR, DP, NP, PS, UE, VS, BU **RECYCLED LEATHER:** RL **LEATHER:** LL

STYLE	STYLE CATEGORY	DIMENSIONS	OPTIONS
225-408	Swivel Gliding Chair	39"H X 35"W X 37"D	Z5
245-408	Ottoman	18"H X 25"W X 22"D	N/A
265-408	Reclining Chair	40"H X 32"W X 34.5"D	TF

FINISHES: Standard: (007) Brown Mahogany, Optional: (021) Coffee, (041) Graphite*, (071) Driftwood*
 *Finish options available on prefixes 245 and 265 only

421 BELLEVUE

DESIGNER'S CHOICE

L A Z B O Y®



210-421, Shown in G171517

COVER CAP CODE CHOICES: FABRIC: DR, UR, DP, NP, PS, UE, VS, BU **RECYCLED LEATHER:** RL

STYLE	STYLE CATEGORY	DIMENSIONS	OPTIONS
210-421	High Leg Swivel Chair	37"H X 33"W X 36"D	Z5

FINISHES: Standard: (007) Brown Mahogany, Optional: (021) Coffee, (041) Graphite, (071) Driftwood

423 ELDORADO

DESIGNER'S CHOICE

L A Z B O Y®



295-423, Shown in FL941965

COVER CAP CODE CHOICES: FABRIC: DR, UR, DP, NP, PS, UE, VS, BU **RECYCLED LEATHER:** RL **LEATHER:** LL, LM

STYLE	STYLE CATEGORY	DIMENSIONS	OPTIONS
295-423	High Leg Reclining Chair	42"H X 32.5"W X 41"D	TF

FINISHES: Standard: (142) Mesa, Optional: (021) Coffee

424 FLETCHER

DESIGNER'S CHOICE

L A Z B O Y®



295-424, Shown in DL159574

COVER CAP CODE CHOICES: FABRIC: DR, UR, DP, NP, PS, UE, VS, BU **RECYCLED LEATHER:** RL **LEATHER:** LL

STYLE	STYLE CATEGORY	DIMENSIONS	OPTIONS
295-424	High Leg Reclining Chair	40"H X 35.5"W X 36.5"D	TF

FINISHES: Standard: (007) Brown Mahogany, Optional: (021) Coffee

425 ALMA

DESIGNER'S CHOICE

L A Z B O Y®



225-425, Shown in E163993

COVER CAP CODE CHOICES: FABRIC: DR, UR, UE, BU RECYCLED LEATHER: RL

STYLE	STYLE CATEGORY	DIMENSIONS	OPTIONS
225-425	Swivel Gliding Chair	36"H X 32"W X 37.5"D	Z5

FINISHES: Standard: (007) Brown Mahogany, Optional: (021) Coffee

430 BRENTWOOD

DESIGNER'S CHOICE

L A Z B O Y®



**STANDARD
LEG DESIGN**

295-430, Shown in FL190784

COVER CAP CODE CHOICES: FABRIC: DR, UR, UE, BU **RECYCLED LEATHER:** RL **LEATHER:** LL, LM

STYLE	STYLE CATEGORY	DIMENSIONS	OPTIONS
295-430	High Leg Reclining Chair	43.5"H X 33.5"W X 35"D	LG, TF
29U-430	High Leg Power Recliner w/ Headrest	43.5"H X 33.5"W X 35"D	LG, LW, TF

FINISHES: Standard: (007) Brown Mahogany, Optional: (021) Coffee, (041) Graphite, (071) Driftwood

431 SCARLETT

DESIGNER'S CHOICE

L A Z B O Y®



028-431, Shown in F171692

COVER CAP CODE CHOICES: FABRIC: DR, UR, DP, NP, PS, UE, VS, BU RECYCLED LEATHER: RL LEATHER: LL, LM

STYLE	STYLE CATEGORY	DIMENSIONS	OPTIONS
028-431	High Leg Reclining Chair	39"H X 33"W X 37"D	TF

FINISHES: Standard: (007) Brown Mahogany, Optional: (021) Coffee, (041) Graphite

448 RILEY

DESIGNER'S CHOICE

L A Z B O Y®



295-448, Shown in E176315

COVER CAP CODE CHOICES: FABRIC: DR, UR, DP, NP, PS, UE, VS, BU RECYCLED LEATHER: RL LEATHER: LL, LM

STYLE	STYLE CATEGORY	DIMENSIONS	OPTIONS
295-448	High Leg Reclining Chair	41"H X 35.5"W X 37"D	TF

FINISHES: Standard: (007) Brown Mahogany, Optional: (021) Coffee

450 HAVEN

DESIGNER'S CHOICE



028-450, Shown in E182023

COVER CAP CODE CHOICES: FABRIC: DR, UR, DP, NP, PS, UE, VS, BU RECYCLED LEATHER: RL LEATHER: LL

STYLE	STYLE CATEGORY	DIMENSIONS	OPTIONS
028-450	High Leg Reclining Chair	40"H X 35"W X 37"D	TF

FINISHES: Standard: (007) Brown Mahogany, Optional: (021) Coffee, (041) Graphite

456 OPAL

DESIGNER'S CHOICE

L A Z B O Y®



215-456, Shown in FL190784

COVER CAP CODE CHOICES: FABRIC: DR, UR, UE, BU **RECYCLED LEATHER:** RL **LEATHER:** LL, LM

STYLE	STYLE CATEGORY	DIMENSIONS	OPTIONS
215-456	Swivel Chair	34.5"H X 51"W X 52"D	C1, F1, FP, P1, Z5

FINISHES: Standard: N/A, Optional: N/A

458 RHEEVES

DESIGNER'S CHOICE

L A Z B O Y®



29U-458, Shown in DL196286

COVER CAP CODE CHOICES: FABRIC: DR, UR, DP, NP, PS, UE, VS, BU **RECYCLED LEATHER:** RL **LEATHER:** LL, LM

STYLE	STYLE CATEGORY	DIMENSIONS	OPTIONS
295-458	High Leg Reclining Chair	43"H X 33.5"W X 36"D	TF
29U-458	High Leg Power Recliner w/ Headrest	43"H X 33.5"W X 36"D	LW, TF

FINISHES: Standard: (007) Brown Mahogany, Optional: (021) Coffee, (041) Graphite

460 REEGAN

DESIGNER'S CHOICE

L A Z B O Y®



210-460, Shown in H157286

COVER CAP CODE CHOICES: FABRIC: DR, UR, DP, NP, PS, UE, VS, BU RECYCLED LEATHER: RL LEATHER: LL

STYLE	STYLE CATEGORY	DIMENSIONS	OPTIONS
210-460	High Leg Swivel Chair	36.5"H X 30"W X 35"D	Z5

FINISHES: Standard: (007) Brown Mahogany, Optional: (021) Coffee, (041) Graphite, (071) Driftwood

462 ROXIE

DESIGNER'S CHOICE

L A Z B O Y®



225-462, Shown in E176453

COVER CAP CODE CHOICES: FABRIC: DR, UR, DP, NP, PS, UE, VS, BU **RECYCLED LEATHER:** RL

STYLE	STYLE CATEGORY	DIMENSIONS	OPTIONS
225-462	Swivel Gliding Chair	37"H X 37"W X 37"D	Z5

FINISHES: Standard: (007) Brown Mahogany, Optional: (021) Coffee

471 CARLETON

DESIGNER'S CHOICE

L A Z B O Y®



**NAIL HEAD
TRIM LOCATION**

295-471, Shown in FL941982

COVER CAP CODE CHOICES: FABRIC: DR, UR, DP, NP, PS, UE, VS, BU RECYCLED LEATHER: RL LEATHER: LL, LM

STYLE	STYLE CATEGORY	DIMENSIONS	OPTIONS
295-471	High Leg Reclining Chair	42"H X 36"W X 39"D	NB, NH, NS, TF
29U-471	High Leg Power Recliner w/ Headrest	42"H X 36"W X 39"D	LW, NB, NH, NS, TF

FINISHES: Standard: (007) Brown Mahogany, Optional: (021) Coffee

479 MIDTOWN

DESIGNER'S CHOICE



**TOP STITCHING
DETAIL SHOWN FOR
LEATHER COVERS**

225-479, Shown in M167662

COVER CAP CODE CHOICES: FABRIC: DR, UR, DP, NP, PS, VS **LEATHER:** LL

STYLE	STYLE CATEGORY	DIMENSIONS	OPTIONS
225-479	Swivel Gliding Chair	40"H X 32"W X 36"D	Z5

FINISHES: Standard: (007) Brown Mahogany, Optional: (021) Coffee

*When ordered in LL cap code, the welt trim will be replaced with single-needle topstitching

498 MARIETTA

DESIGNER'S CHOICE

L A Z B O Y®



235-498, Shown in D156332

COVER CAP CODE CHOICES: FABRIC: DR, UR, UE, BU RECYCLED LEATHER: RL LEATHER: LL, LM

STYLE	STYLE CATEGORY	DIMENSIONS	OPTIONS
235-498	Chair	39"H X 30"W X 36.5"D	Z5

FINISHES: Standard: (007) Brown Mahogany, Optional: (021) Coffee, (041) Graphite, (071) Driftwood

605 CLEO

DESIGNER'S CHOICE

L A Z B O Y®



**NAIL HEAD
TRIM LOCATION**

2SC-605

COVER CAP CODE CHOICES: FABRIC: DR, UR, UE, BU LEATHER: LL, LM

STYLE	STYLE CATEGORY	DIMENSIONS	OPTIONS
2SC-605	2-Arm Chaise w/ Storage	40"H X 38.5"W X 67"D	C1, F1, FP, NB, NH, NS, P1, Z5, ZB

FINISHES: Standard: (007) Brown Mahogany, Optional: (021) Coffee, (041) Graphite, (071) Driftwood

AVAILABLE IN LA-Z-BOY SELECT™ COVERS

FABRIC:

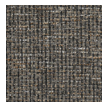
D1853 - Essex, D1969 - Slone



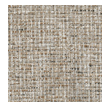
D185333
Dove



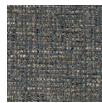
D185353
Steel



D185356
Peppercorn



D185372
Hickory



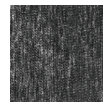
D185384
Atlantic



D185392
Spa



D196931
Pearl



D196957
Charcoal



D196964
Putty



D196972
Brown Sugar

632 TAHOE

DESIGNER'S CHOICE

LA Z BOY®



ADDITIONAL STORAGE

240-632

COVER CAP CODE CHOICES: FABRIC: DR, UR, DP, NP, PS, UE, VS, BU **RECYCLED LEATHER:** RL **LEATHER:** LL, LM

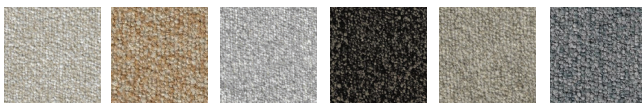
STYLE	STYLE CATEGORY	DIMENSIONS	OPTIONS
240-632	Ottoman	21.5"H X 38.5"W X 38.5"D	N/A

FINISHES: Standard: N/A, Optional: N/A

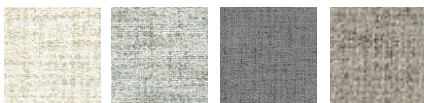
AVAILABLE IN LA-Z-BOY SELECT™ COVERS

FABRIC:

D2009 - Promise, E1917 - i-Adario



D200931 Ecu D200946 Gold D200952 Oyster D200959 Thunder D200972 Khaki D200983 Powder



E191734 Basmati E191752 Fog E191753 Stone E191765 Taupe

668 MONTROSE

DESIGNER'S CHOICE

LA Z BOY®



ADDITIONAL STORAGE

60M/240-668

COVER CAP CODE CHOICES: FABRIC: DR, UR, UE, BU RECYCLED LEATHER: RL LEATHER: LL, LM

STYLE	STYLE CATEGORY	DIMENSIONS	OPTIONS
60M-668	Sectional Armless Chair	38"H X 31"W X 39.5"D	Z5, ZB
240-668	Ottoman	22"H X 31"W X 31"D	N/A

FINISHES: Standard: N/A, Optional: N/A

AVAILABLE IN LA-Z-BOY SELECT™ COVERS

FABRIC:

D2031 - Lullaby, E1877 - Navaro



D203133
Porcelain

D203158
Steel

D203165
Taupe

D203173
Burlap

D203179
Mink

D203193
Mist

E187717
Spice

E187731
Cream

E187732
Putty

E187764
Stone

E187788
Dusty Rose

916 KIMBERLY

DESIGNER'S CHOICE

L A Z B O Y®



028-916, Shown in C177287

COVER CAP CODE CHOICES: FABRIC: DR, UR

STYLE	STYLE CATEGORY	DIMENSIONS	OPTIONS
028-916	High Leg Reclining Chair	41"H X 29.5"W X 37.5"D	TF

FINISHES: Standard: (007) Brown Mahogany, Optional: N/A

931 CHARLOTTE

DESIGNER'S CHOICE

L A Z B O Y®



028-931, Shown in C177223

COVER CAP CODE CHOICES: FABRIC: DR, UR, DP, NP, PS, UE, VS, BU **RECYCLED LEATHER:** RL

STYLE	STYLE CATEGORY	DIMENSIONS	OPTIONS
028-931	High Leg Reclining Chair	38.5"H X 33"W X 35"D	TF

FINISHES: Standard: (007) Brown Mahogany, Optional: (021) Coffee, (041) Graphite

duo®

L A **Z** B O Y®

SOPHISTICATED

STYLE

LEGENDARY

COMFORT

RECLINING

POWER

Options

C1 CORD



Cord accent can be added to primary or secondary pillows on most styles.

F1 FRINGE



Fringe accent can be added to primary or secondary pillows on most styles.

FP FEATHERLITE PILLOWS



Upgrades accent pillows to the luxurious comfort of 95% duck feathers, 5% duck down, encased in a 100% cotton downproof ticking (DPT) fabric for additional support.

LT LEFT HAND POWER ACTIVATOR



Changes the location of 2-button mounted controller with USB for operating the power recliner from right-side to left-side sitting.

NB NAILHEAD TRIM - BLACK



Hammered black nickel nailhead trim can be added to select styles.

NH NAILHEAD TRIM - BRASS



Brass nailhead trim can be added to select styles.

NS NAILHEAD TRIM - PLATINUM



Platinum nailhead trim can be added to select styles.

P1 CONTRASTING PILLOWS



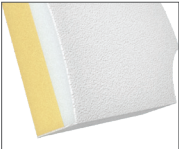
Fabric on accent pillows can be changed.

Z5 COMFORTCORE® PLUS TEMPUR-RESPONSE® MEMORY FOAM CUSHIONING



Upgrades standard ComfortCore® seat cushions to ComfortCore plus TEMPUR-Response® Memory Foam seat cushions.

ZB COMFORTCORE® PLUS TEMPUR-RESPONSE® MEMORY FOAM SEAT AND BACK CUSHIONING



Upgrades standard ComfortCore® seat cushions and backs to ComfortCore plus TEMPUR-Response® Memory Foam seat and back cushioning.

O88 1YC BATTERY PACK



Add a rechargeable lithium-ion battery pack to power motion styles to allow for cordless operation. Note: Not available on lift chairs.

Finish Options

007 FINISH - BROWN MAHOGANY



The medium brown patina of this finish is a classic that easily mixes with other finishes in a room for an enduring look that never goes out of style.

021 FINISH - COFFEE



A deep rich finish with dark brown undertones, this sophisticated hue creates a contemporary vibe and an up-to-the-minute look.

041 FINISH - GRAPHITE



With understated gray tones that project a style that's both dramatic and modern, this finish makes a powerful design statement in any room.

893 COLBY

duo® BY LA-Z-BOY®

LA Z BOY®

duo



P94-893

COVER CAP CODE CHOICES: FABRIC: DR, UR, DP, NP, PS, UE, VS, BU **RECYCLED LEATHER:** RL **LEATHER:** LL, LM

STYLE	STYLE CATEGORY	DIMENSIONS	OPTIONS
P94-893	duo® Reclining Chair	41"H X 39"W X 39.5"D	LT, Z5

FINISHES: Standard: (007) Brown Mahogany, Optional: (021) Coffee, (041) Graphite

AVAILABLE IN LA-Z-BOY SELECT™ COVERS

FABRIC:

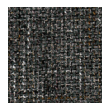
C1700 - Nico



C170033
Oyster



C170053
Ash



C170057
Charcoal

899 BENNETT

duo® BY LA-Z-BOY®

LA Z BOY®

duo



P94-899

COVER CAP CODE CHOICES: FABRIC: DR, UR, UE, BU **RECYCLED LEATHER:** RL **LEATHER:** LL, LM

STYLE	STYLE CATEGORY	DIMENSIONS	OPTIONS
P94-899	duo® Reclining Chair	39.5"H X 37.5"W X 39"D	Z5

FINISHES: Standard: (007) Brown Mahogany, Optional: (021) Coffee, (041) Graphite

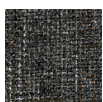
AVAILABLE IN LA-Z-BOY SELECT™ COVERS

FABRIC:

B1808 - Social Club, D2030 - Howell



B180852
Stone



B180857
Charcoal



B180868
Pewter



B180872
Chalk



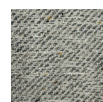
B180876
Cocoa



D203032
Sand



D203034
Granite



D203053
Ash





L A  B O Y[®]

**Visit us at la-z-boy.com
for more information**

